

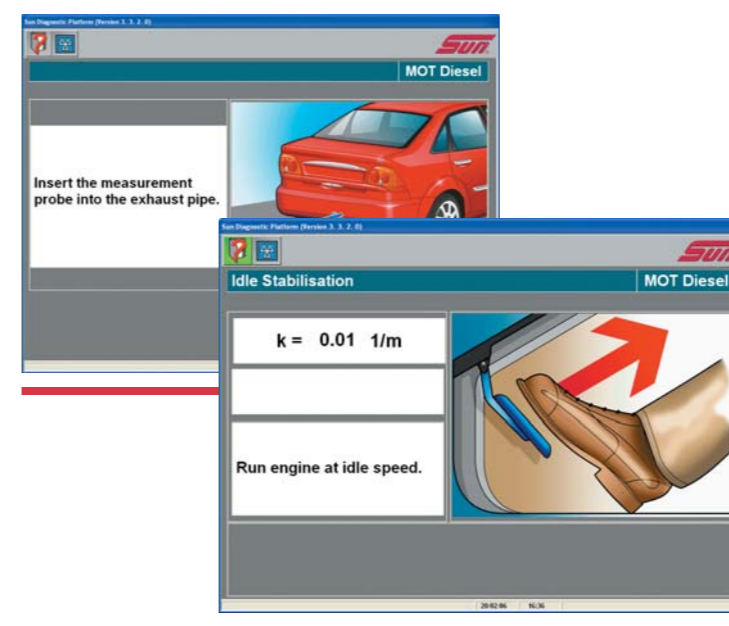
Technical Specification

General		
Operating temperature	5°C to 40°C	
Storage temperature	-20°C to 60°C	
Relative humidity	to 90% non-condensing	
Maximum atmospheric pressure variation	700 – 1100mbar	
Control cabinet		
Height (including monitor)	1600mm (+/-, depending on size of flat screen monitor, height adjust positioning)	
Width	710mm	
Depth	650mm	
Weight	90Kgs approx.	
Power supply		
Voltage	115/230V	
Range	90 - 260V	
Current	7.5/6A	
Frequency	47 - 63Hz	
Gas measurements		
	Range	Relative/Absolute
O ₂	0% to 25%	± 5% / ±0.1
CO	0% to 9.99%	± 5% / ±0.03
CO ₂	0% to 18%	± 5% / ±0.5%
HC	0ppm to 2000ppm	± 5% / 10ppm
	2000ppm to 5000ppm	± 5% / 10ppm
	5000ppm to 9000ppm	± 10%
NO	0ppm to 5000ppm	± 5% / 25ppm
RPM	0rpm to 9999rpm	± 1.0%
°C	0°C to 120°C	
°F	14°F to 302°F	
Lambda (λ)	0.500 to 4.000 (calculated)	
AFR	5.00 to 50.00 (calculated)	
		(at room temperature)
DGA 2500 Combi (includes DSS 10 Smoke Meter)		
Dimensions	190 x 123 x 145mm	
Weight	3.5kg	
High Voltage Power Supply	115 / 230V ~ 50 / 60Hz (+15% / -10%) from DGA 2500 ¹	
Low Voltage Powerful Supply	15V ac from external power supply unit	
Data Connection	RS-232	
Smoke Density Range (m ⁻¹)	0 – 9.99m ⁻¹	
Resolution (m ⁻¹)	0.01m ⁻¹	
Smoke Density Range (%)	0 - 100%	
Resolution (%)	0.1%	
Accuracy	< 1.5%	
Operating Temperature	-15°C – +40°C	
Storage Temperature	-32°C – +50°C	
¹ dependent on the external power supply, non switchable)		

The Standard in Information and Diagnostic Systems

DGA 2500

V.O.S.A Approved Emissions Analyser



- VOSA approved for MoT emissions testing
- Wireless RPM and oil temperature measurement
- OIML zero rated gas bench module
- Category A and B diesel smoke emissions testing
- 17" flat screen monitor
- Monochrome laser jet printer
- Powerful industry standard PC technology
- Expandable diagnostic capabilities
- Lockable storage cupboard



Snap-on Diagnostics
 Denney Road, King's Lynn, Norfolk PE30 4HG
 T: +44 (0) 1553 692422 F: +44 (0) 1553 697254
 E: techsales.uk@snapon.com W: www.sun-diagnostics.com



The manufacturer reserves the right to change or delete models and/or specifications without prior notice. All dimensions and drawings within this publication are a guide only, before carrying out any civil works, always obtain the current installation drawings from the service department. Nothing contained within this publication is intended to extend any warranty or representation, expressed or implied, regarding the products described herein. Any such warranties or other terms or condition of sale of products shall be in accordance with Snap-on/Sun Standard Terms and Conditions of Sale for such products, which are available on request. Snap-on and Sun are registered trademarks.



Diagnostic tools, software and information for now and the future



Introduction

With over 70 years experience in the automotive aftermarket, the Sun brand has become synonymous with quality and service with an unparalleled reputation for providing excellent value.

The Sun DGA 2500 Diagnostic Gas Analyser and Emissions platform has been developed with all the above qualities in mind, but also to provide the modern workshop with an expandable tool that can grow and develop with your business.

With fast warm up and initialisation, the DGA 2500 is ready for action in a matter of seconds; and by using familiar and easy to use windows based software, the DGA 2500 does not require any specialised training.

At the heart of the DGA 2500 is a powerful industry standard PC, with a large 17" flat screen monitor providing the test technician with clear and easily visible information, plus a monochrome laser jet printer for hard copy print out of test results. Further use of the PC permits the storing of valuable customer vehicle information to assist in developing your business and maintaining happy customers for years to come.

The DGA 2500 comes as standard with wireless RPM and Oil Temperature measurement, ensuring a cable free work space, plus a secure lockable storage space for other diagnostic tools and adaptors.

Calibration, Maintenance and Service

It is a V.O.S.A requirement, that all equipment used for mandatory testing of vehicles is covered with an appropriate calibration agreement.

Snap-on offer tailored calibration; maintenance and service agreements for all our V.O.S.A approved equipment.

- Scheduled calibrations
- Routine maintenance
- Extended warranty
- Combinations of the above

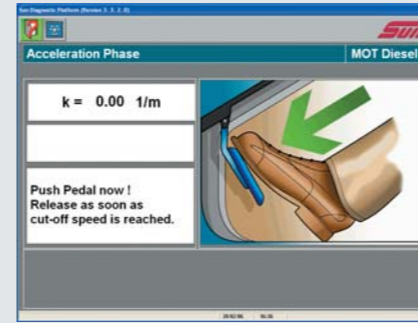
Using Snap-on employed U.K.A.S accredited engineers, we can provide the very best care to protect your investment, and with our peace of mind and flexible finance packages, Snap-on can help with the budgeting also.



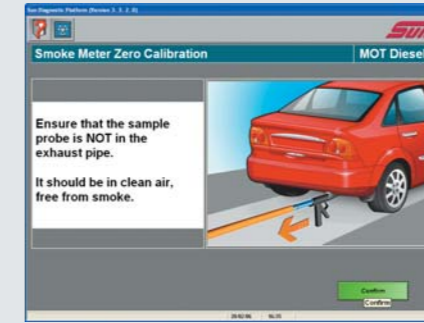
Configuration

Feature	DGA 2500 Combi	DGA 2500	DGA2500 D
Robust cabinet with secure storage space	●	●	●
Dell™ Intel processor PC	●	●	●
17" flat screen monitor	●	●	●
Monochrome laser jet printer	●	●	●
Windows program and operating system	●	●	●
Wireless RPM & Oil temperature measurement	●	●	●
OIML zero rated Gas module	●	●	●
DSS 10 smoke meter	●	●	●

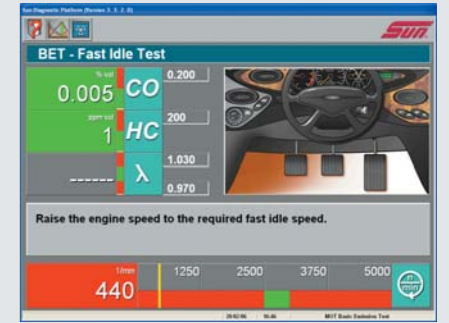
Easy to use Windows based software



Acceleration Phase



Smoke Meter Zero Calibration



BET - Fast Idle Test



21" Flat Screen Monitor

Offering improved visibility for viewing bigger graphics and data, a must for the larger workshop.

Options



Calibration and Service

Snap-on employ their own dedicated, U.K.A.S. accredited Service Engineers, and provide tailored agreements to suit your individual requirements.

- LE 2500 Head Lamp Aligner**
- Robust design
 - RS232 capability
 - Clear and simple beam aim screen
 - Additional rails available for drive through bay



S.A.I.S Sun Automotive Information System

This fast, icon driven and user friendly information system software provides comprehensive and detailed vehicle data.



MoT/ATL

Considering becoming a V.O.S.A approved testing station? Snap-on have proven, totally integrated service to guide and support you through all the required procedures and legislation requirements.



Flexible Competitive Finance Packages

Snap-on Finance will be pleased to help with finance for your ATL investment, subject to terms and conditions.

