

SCISSOR LIFT

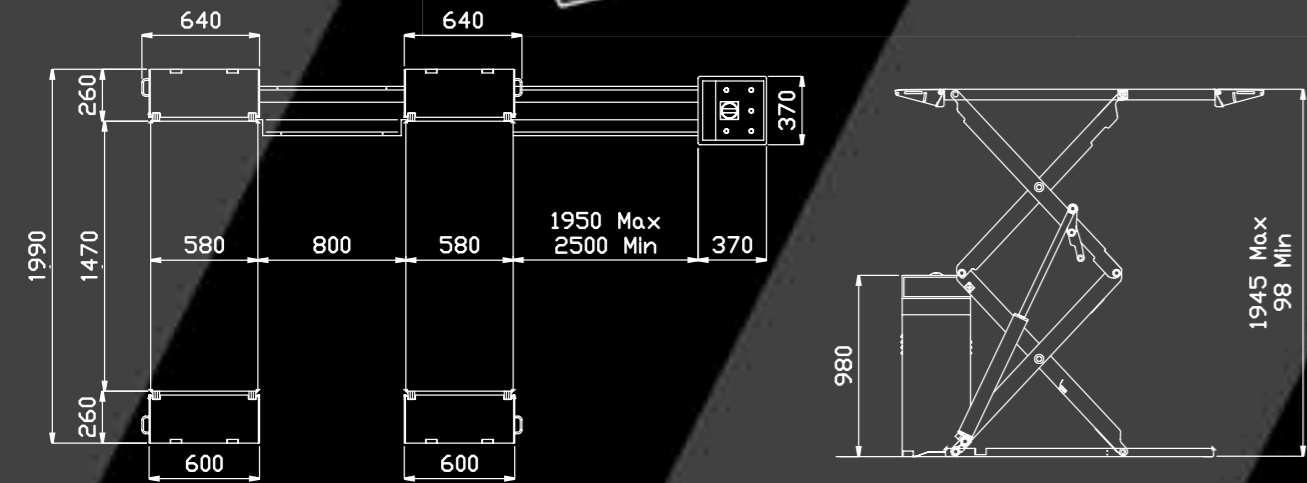
SSL30 Extra-low-profile hydraulic scissors lift

Features

- Easy to handle drive-on and drive-off ramps
- Hydraulically synchronized platforms
- Overload safety-valve
- Safety-valve in case of sudden loss of pressure
- Automatic lowering control
- "Dead man" controls 24V
- Set of 4 rubber pads
- 'Buzzer' on last portion of descent

Options

- Single phase version
- Recess frame
- Kit of embedded run-on and run-off skids
- Additional set of lifting pads available



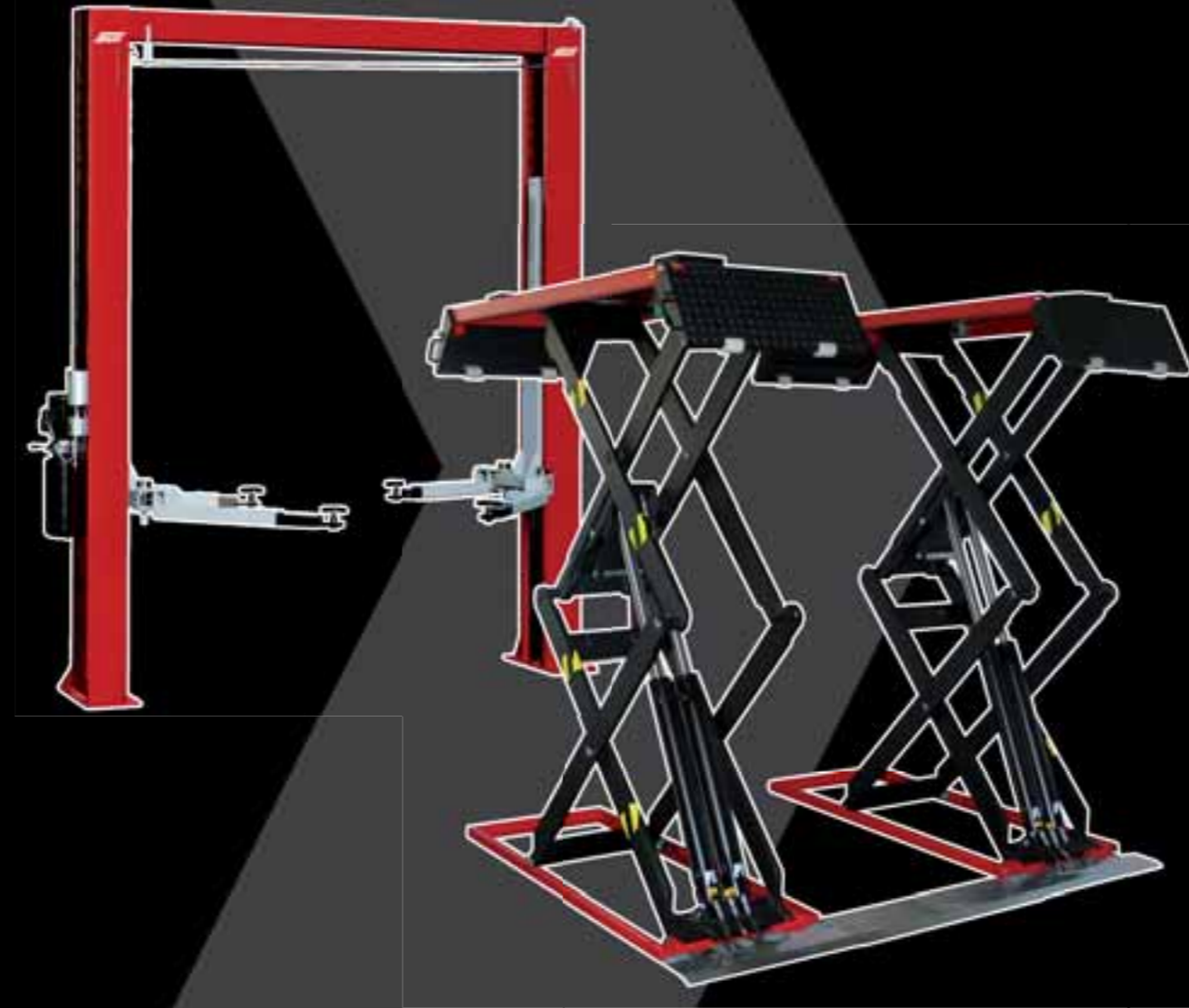
Minimal height: 98 mm



Double hydraulic system

Technical Specification	
Operation	Electro-hydraulic
Capacity	3.200 kg
Weight	730 kg
Lifting/lowering	35 s / 40 s
Lifting height	1.945 mm
Motor	3 kW-3 ph 230-400 V / 50Hz

Snap-on Diagnostics



TWO POST AND SCISSOR LIFTS

INTRODUCTION

Are you considering how to best modernise your workshop equipment?

Your Snap-on Technical Sales Consultant offers a complete range of well-built and designed, high specification equipment to suit your precise needs.

Why not give him a call on 01553 692422 and ask him to drop round and take you through the range?

We offer competitive and flexible finance packages to help you manage the cost of your equipment.

We offer an on site survey prior to purchasing your equipment. The product is then delivered to site and installed by our own engineers. Once your equipment is installed and up and running, we can provide unrivalled product support, with over the telephone assistance from our dedicated team based in the UK.

Our directly employed Snap-on network of UKAS accredited engineers are on hand to provide routine maintenance to keep your investment in the best working condition.

Our experience and dedicated team means the Sun brand has an unparalleled reputation for providing the highest quality, excellent value and great service.



Snap-on

SUN

**Snap-on
Finance**



Denney Road, King's Lynn, Norfolk PE30 4HG
 T: +44 (0) 1553 692422 F: +44 (0) 1553 697254
 E: techsales.uk@snapon.com
 www.sun-diagnostics.com

**Snap-on
Diagnostics**

www.sun-diagnostics.com

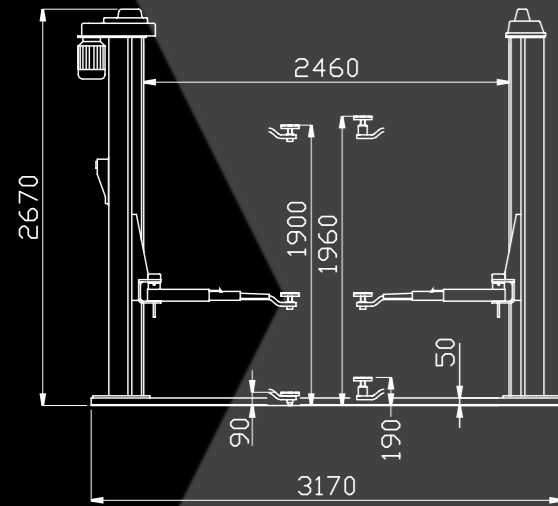
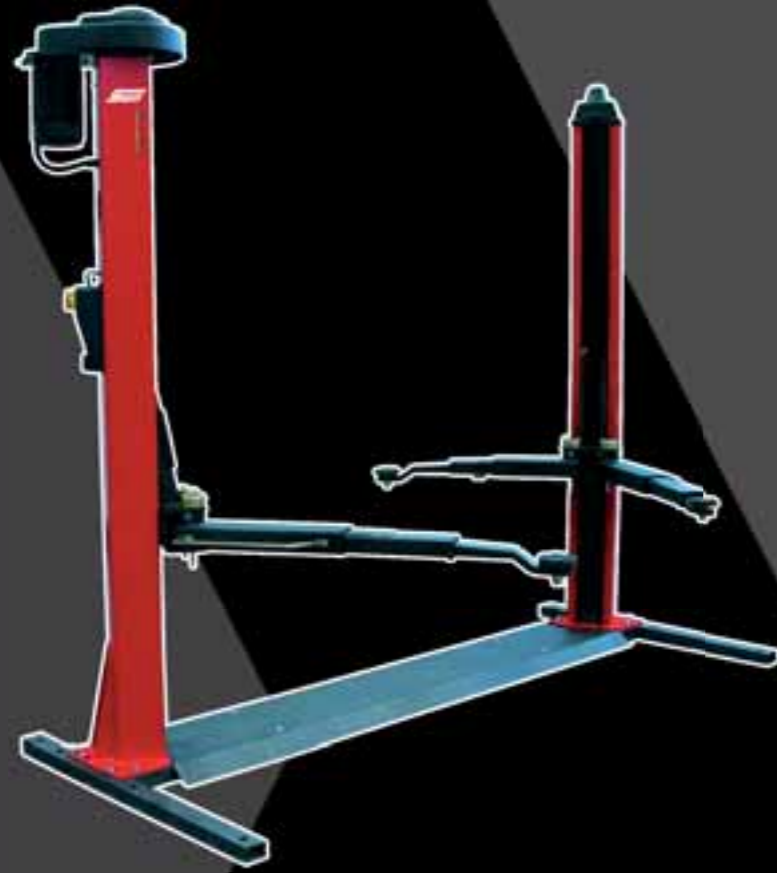
TWO POST LIFTS



SVL30 Mechanical - asymmetric lift with chain drive

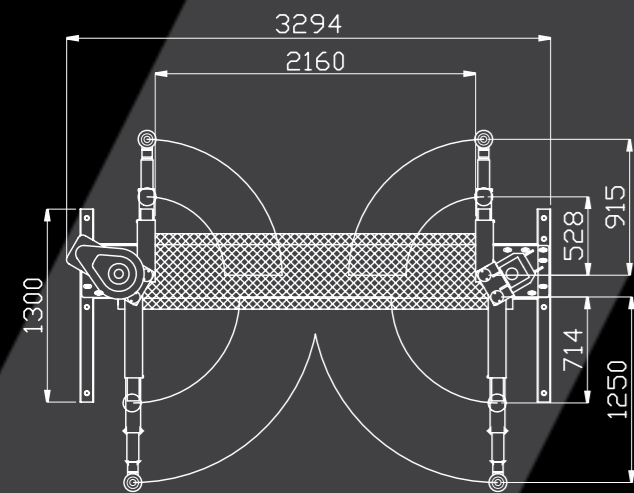
Features

- Automatic arm locking device
- "Dead man" controls, 24V
- Foot guards
- Electromechanical safety device
- Automatic lubrication



Options

- Lifting pad extensions
- Single phase motor on the SVL32 (3.2T) Asymmetric electro hydraulic version
- Triple stage arms for the SVL40

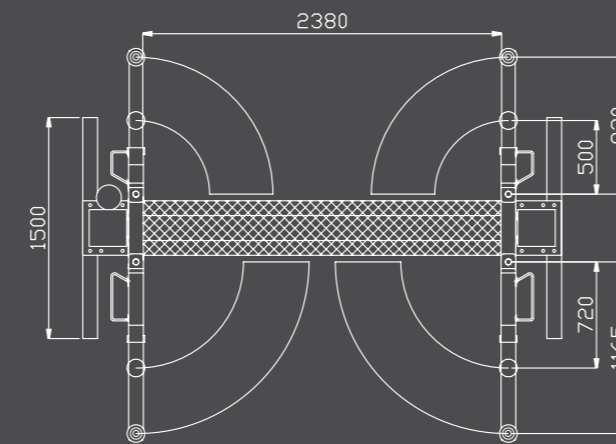
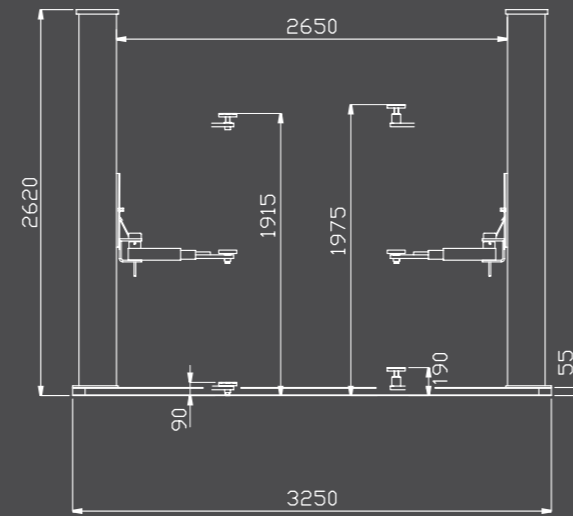


Technical Specification	
Operation	Electro-mechanical
Capacity	3,000 kg
Weight	600 kg
Lifting/lowering	35 s
Lifting height	1900 mm
Motor	4 kW - 3 ph. 230-400 V / 50 Hz

SVL32/36 Asymmetric electro-hydraulic lift with single ram

Features

- Available in either 3.2 ton or 3.6 ton weight capacity
- Electromechanical locking device in case of rope failure
- Automatic arm locking device
- Foot guards
- Overload safety-device
- Descent control valve
- Parachute valve
- "Dead man" controls 24V
- Electrically controlled mechanical safety device
- Mechanical synchronization



Note: Drawings shown are for the SVL36. Drawings for the SVL32 can be provided on request.

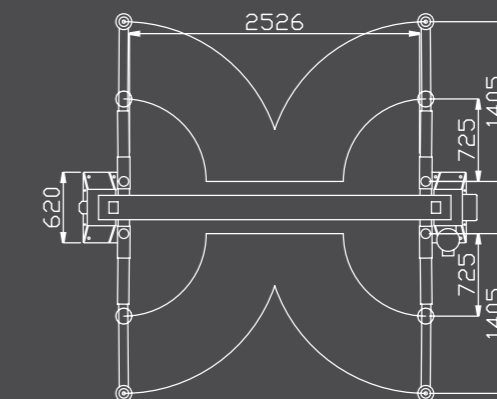
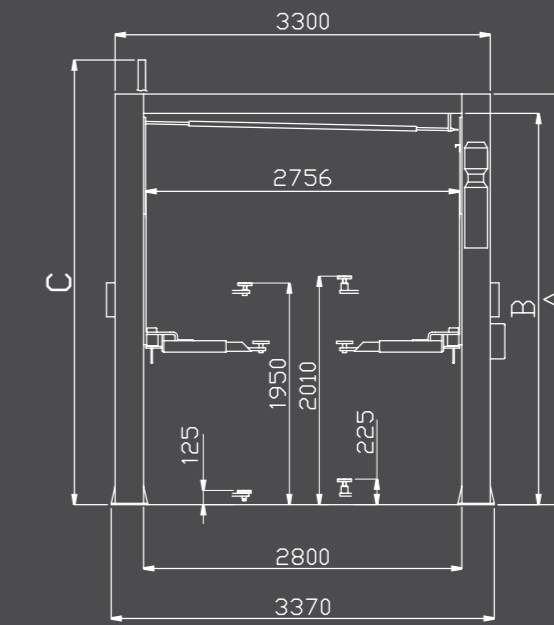


Technical Specification	
Operation	Electro-hydraulic
Capacity	3,200 kg
Weight	780 kg
Lifting/lowering	45 s
Lifting height	1920 mm
Motor	2,2 kW - 3 ph. 230-400 V / 50 Hz

SVL40 Symmetric electro-hydraulic baseless lift with twin ram

Features

- Electromechanical locking device
- Automatic arm locking device
- Foot guards
- Overload safety-device
- Descent control valve
- Parachute valve
- "Dead man" controls 24V
- Mechanical synchronization



Technical Specification	
Operation	Electro-hydraulic
Capacity	4,000 kg
Weight	850 / 950 kg
Lifting/lowering	35 s
Lifting height	1950 mm
Motor	2,2 kW- 3 ph. 230-400 V / 50 Hz

